



Focusing on the **critical few capabilities** that drive the **majority of economic value**, algorithmically.



Deep learning platform to identify the 20% of capabilities and assets that drive new economic value within a changed environment.

While investment and financial professionals identify and model financial assets, we identify and execute around operational capabilities and assets of the Supply Chain and Third Party Networks to enable:

- Simulation, visualization and predictive analytics into operational impacts of capital allocation decisions
- Algorithmic insights into new sources of value
- Stress-testing strategic assumptions regarding where value will be created and destroyed and what to do about it.
- Identify “faint signals” that can lead to operational, financial and reputational exposure.

Where economic profit goes to die.

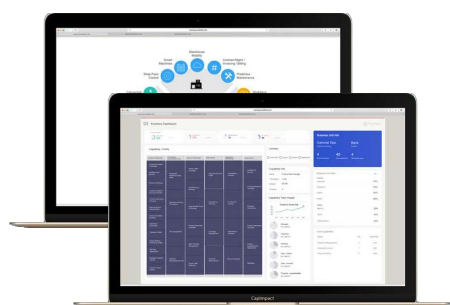
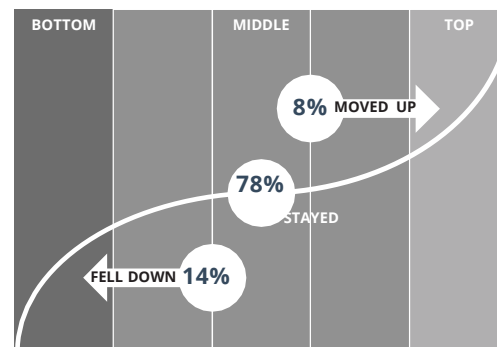
Economic profit disproportionately accrues to the top 15% of firms. This leaves the remaining 85% struggling to change in material and significant ways.

On average only 8% of the 85% make it to the top 15%.

How do you change the odds?

Take a new approach.

CapImpact delivers signals, focus and recommended execution on the new “20%” of capabilities that will drive the majority of new economic value. Algorithmically.



SIGNALS

Where is value being created or destroyed within the business or portfolio?

FOCUS

What are the “new 20%” of capabilities critical to capture new sources of economic value?

EXECUTION PLANNING

What do we do about it? And, how do we go about it?

Applying algorithms, not hunches.

Harness deep learning and robust data-driven visualization, simulation and predictive analytics to answer:

Where is value being created and destroyed?

What is the decay/adoption rate of key capabilities?

What/who is driving those rates and what can be done about it?

What are the “new 20%” capabilities that drive new value?

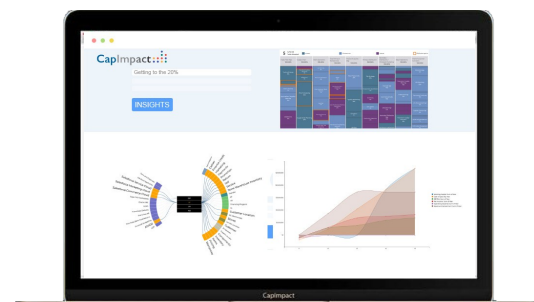
How do we optimize our partner network?

How do we get better insight into competitive pressures and opportunities?

Getting to the right answers fast and accurately.

“CapImpact did in six weeks what it usually takes others more than 6 months to do.” - PE Sponsor

Insights in days, rather than weeks. Execution planning in weeks, rather than months, and overall program execution in months, rather than years. That's CapImpact.



CapImpact: a technology platform designed around the needs of the Private Equity community. CapImpact more quickly gets you to the “new 20%” through insight and execution.



877-717-7476



info@clearprism.com



clearprism.com