

Strengthening Organizational Resilience – with a focus on Supply Chain Monitoring, Risk Management, and Complex Technology Implementations with AI Solutions

Market Leaders Execute Three Skills Well.

- **Predict** Seeing around corners
- **Manage Risk** Strengthening organization resilience for competitive advantage
- **Execute** Adapting to what's around those corners

We enable companies to do them better.

We have two sides to our business that work together to harness pragmatic expertise and patented algorithms to drive value:

Consulting by CLEAR SERVICE

Technology by CapImpact

Complex Program Management

- Pragmatic approach to transformation
- 20+ year avg. experience
- Everything Architecture

Managed Services

- ERP Lifecycle Management
- Technology Enhancement
- Continuous Improvement
- Training/Process Optimization

Technology-Led Planning and Execution

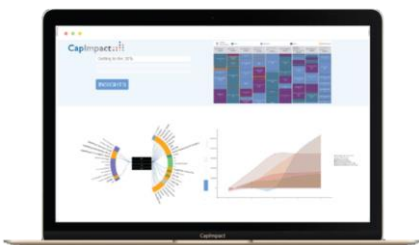
- QUBE – Accelerated ERP Implementations
- Due Diligence
- UI/UX Design
- Visualizations and Story Telling

Data Science, AI & Modelling

- Supply Chain Event Sensing
- Third Party Exposure
- AML/Fraud
- Regulatory/Portfolio Risk
- COVID Recovery

So what?

Insights in days, rather than weeks. Execution planning in weeks, rather than months, and overall program execution in months, rather than years. That's ClearPrism, powered by CapImpact.



ClearPrism
Focused on Execution.
Powered by Algorithms.

781-717-7476
info@clearprism.com
clearprism.com